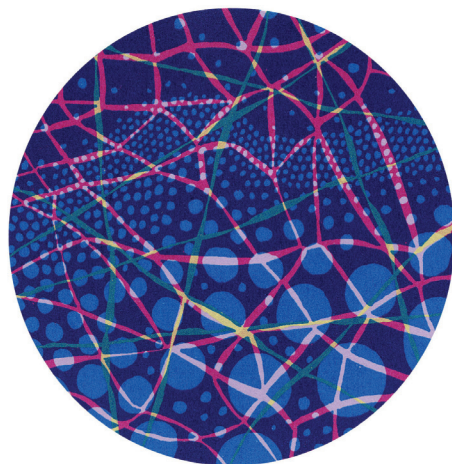


Emma C Tabor

Printmaking and drawing



My drawings are explorations in pattern, experimenting with line and forms, investigating the visual language that develops. I have an initial starting point but each drawing grows in a unique way to find its final form and reveal itself. They are part of a developing process rather than a representation of any identifiable form; I leave it to the viewer to decide what is happening.

Drawing is also the basis of all my printmaking but the processes allow for the investigation of the effects of colour. Layering printed drawings in different colours alters their mood and impact. This work allows re-interpretation of the drawings in more complex situations. Working on my art is a playful exploration from within, expressing parts of my whole.

www.emma.tabor.me.uk
emma@tabor.me.uk

Mart Tebbs

Painting and drawing



Between one thought and the next is a gap. If you are lucky enough to fall down this gap you discover that the field of your experiencing and the field of creativity are not separate in the least bit.

Such glimpses of our innate wholeness do not last very long however, and with the next thought we are back into distraction again.

Moving through the astonishingly rich natural world often evokes such moments very strongly in me. I find that I have developed a sort of language of forms, a personal imagery, that I hope communicates something of this to you.

www.marttebbs.co.uk
mart.tebbs@virgin.net



'Glimpsing Wholeness'

24 May to 8 June 2014

An exhibition by established and emerging artists whose practices have been enriched by a relationship with *Othona West Dorset*.

Displayed in the spacious simplicity and stillness of Othona's chapel, the work traces the artists' creative journeys. Visitors are welcome to chat with the artists, explore the grounds and enjoy the stunning sea views.

Artists' talks: Tues 3 June, 7.30 for 8.00pm

Open daily: 11.00am - 5.00pm

Refreshments/cream teas: 2.30-4.30pm

www.othona-daw.co.uk



Elizabeth Sayers

Textiles



My passion is landscape and inspiration comes from walking in the countryside. My aim is to distil the experience to its simplest elements of light, shade, line, and colour; using textiles to evoke a sense of place and the feeling of being there. My pieces also represent an inner landscape, my emotional response to the natural world.

My pieces are made of layers of hand dyed silk, collaged and then quilted using hand and machine stitching. The long meditative process of making them is an important form of spiritual practice that helps me deepen my connection to the natural world.

I hope these pieces help you to connect with landscapes that have meaning for you. If you would like to commission a piece inspired by your favourite landscape, please talk to me.

www.esayers.co.uk
elizabeth@esayers.co.uk
07771 458676

Robin Shaw

Photography



I use photography to explore those human experiences that are often not represented despite our image saturated culture; those experiences that acknowledge the vulnerability of our shared humanity.

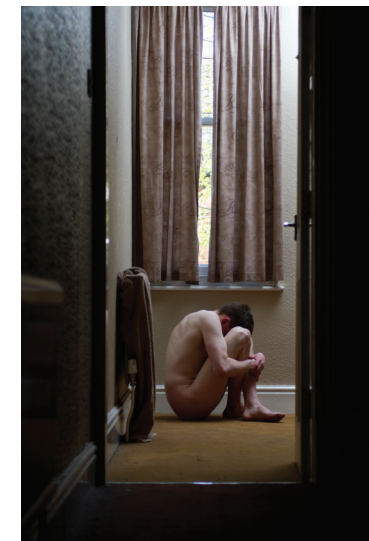
These vulnerable moments are often only glimpsed out of the corner of an eye, perhaps because we fear it may be intrusive, embarrassing or even dangerous to look directly.

I invite you to look at these photographs with a sense of curiosity. They reveal some of my respectful, tender, inquisitive explorations, as a woman artist, into my experiences of men's bodies.

www.robinshaw.net
robin.shaw.photos@gmail.com

Tiernan Philpot

Photography



The central concept of this work, '*We are men alone*', is surrounding the perception of men. My interest first and foremost is to question the way both men and women see the ideals of masculinity with regard to body image and personal qualities.

My personal interest in these issues and subjects has been from an exploration of how these ideals influence me and other people, and the feelings and emotions we feel because of this. I have used digital photography to capture images of men in situations that may represent contradictory feelings, emotions and body image to those attributed to the ideals of masculinity and the perception of men.

Tiernan Philpot received a first class BA Hons in Photography and Video from De Montfort University in 2013. During Dorset Art Weeks, he will be taking photos in South East Asia.

www.othona-bb.org.uk/tiernan_philpot_2014
tiernan_philpot@hotmail.co.uk